




Community of the Sacred
**KUAN YIN
TRANSMISSION™**

KUAN YIN TRANSMISSION™ FOUNDATIONS PROGRAM PROSPECTUS

Divine Feminine Energy Work



Alana Fairchild



The beautiful Kuan Yin Transmission™ healing program has been created by innovative and renowned spiritual teacher, Alana Fairchild, to support your spiritual intimacy with the Divine Feminine. You will be guided through various processes and practices to energetically attune yourself with Our Five Enlightened

Mothers. These are five diverse, yet unified, expressions of the Divine Feminine - Kuan Yin, Isis, Mother Mary, Tara and Kali.

During the course, you will be initiated into sacred practices of these Divine Feminine beings to generate healing spiritual energies with voice, hands and heart.

Gratitude for art by Zeng Hao from Alana's Kuan Yin Oracle, Kuan Yin Oracle Journal, Kuan Yin Transmission book, Kuan Yin Transmission cards, and Kuan Yin Transmission album of music and meditation



Welcome to The Kuan Yin Transmission™

The call of the Divine Feminine is the call to the heart, to authenticity, to depth, compassion and meaning. Alana has created this divine feminine energy work modality as a method of sacred practice and offering, to generate spiritual benefit for all beings.

The Divine Feminine practices taught in the program are intended to support all hearts and the practitioners of this work are not limited by biology or gender. Love is the unifying essence of the Divine Feminine and all humans that wish to strengthen Her loving presence in our world for the greater good are invited to learn and express these sacred healing arts. Your heart can truly become a precious conscious collaborator in the

pure higher purpose devoted to manifesting love, protection, grace and blessings for all.

The Kuan Yin Transmission™ is a complete spiritual path of Divine Feminine embodiment and sacred energy work practices for self, others and the planet. Integrating the ancient practices of mudra (sacred gesture) and mantra (sacred sound) and channelling practices such as The Red Threads of Isis™, The Seal of Horus™ and Mudra Dance™. The program is designed to nourish your soul, heal your heart and purify your mind through Divine Feminine presence. Participants are encouraged to gently yet effectively empower and elevate their spiritual path and proficiency in manifesting higher energies.

Spiritual Guidance with Alana

In the Kuan Yin Transmission™ program, you will be guided through new healing practices created and taught by Alana, whose energy and experiences gathered from her own soul journey allows her to lovingly guide you along your own spiritual path.

With the support of our trained and consciously curated team, and our warm online global community, we work together with loving intention to manifest healing energies, promote enlightenment and increase our embodied presence of compassionate wisdom for the spiritual benefit of all beings.

Our Kuan Yin Transmission™ foundations program evolves over 16 weeks, through five heart-opening modules based on the primordial wisdom-essence of the five elements. Each of the modules combines spiritual guidance with Alana, energy offerings and technical instruction in Divine Feminine energy work techniques, with intent to empower you to embrace your soul journey and amplify your capacity to invoke, embody and radiate divine healing energies.

Through inspirational teaching, technical training and experiential practices you will be supported to learn techniques for spiritual growth, self healing, and practicing healing for others and our planet. You will be offered professional practice options that allow you to craft your own unique style of modality practice, such as offering energy healings for others one-on-one or in groups, with options to utilise hands on healing, dance, music, voice or meditation with a crystal.

Course materials are unique and considerable, available only within this program. The materials include soul-nourishing video, audio recordings and written teachings in PDF format. You will also have the opportunity within our team-hosted, course-specific online forum to engage with your course cohort, sharing experiences and asking questions, and you may choose to give and receive practice sessions, participate in the live online team-hosted offerings shared in each module, and the online live sessions with Alana from time to time too.





A UNIQUE DIVINE FEMININE ENERGY WORK PRACTICE THAT EMPOWERS YOU TO:

- Awaken the presence of Our Five Enlightened Mothers within. Through the spiritual activation key known as The Hamsa of the Cosmic Madonna™, centered around the frequencies of Venus, you are taught to generate the presence of Our Five Enlightened Mothers in your own mind, body and soul.
- Be initiated into sacred practices to manifest Divine Feminine energy. Through learning and applying the techniques, your soul becomes increasingly empowered to channel an exquisite healing flow, embracing the energies to heal yourself, others and our planet.
- Creativity and flexibility to intuitively craft your own style of practice. Explore numerous possible combinations of essential aspects of practice, layering optional additional methods such as chanting, singing, sacred dance, hands-on healing energy or distant healing through meditation with a crystal, to create your own signature modality practice.






MEET OUR FIVE ENLIGHTENED MOTHERS



OUR MOTHER OF COMPASSION - KUAN YIN

Kuan Yin will assume infinite forms to meet the needs of all beings. She does this from a place of compassion. She is gentle and yet as an enlightened being she will assume a more ferocious form if there is no other way to accomplish what is necessary to offer protection.




She assumes masculine forms when that will best serve her higher loving purpose, bringing through much needed sacred masculine energies of discernment, clarity and courage. Even so, she constantly radiates the Divine Feminine qualities of wisdom and compassion that nourish, protect and guide our souls to recognise and manifest our highest path.

OUR MOTHER OF MIRACLES - MOTHER MARY

Mother Mary has manifested healing miracles and empowering visions for humans all around the world. She is both soft and fierce, demanding that we live our soul truth and grow spiritually, yet supporting us with her remarkable, palpable grace every step of the way. As a truly kind, powerful and astonishingly resourceful spiritual guardian, she is willing and able to respond to all genuine requests for help.

Whilst Our Lady holds standards for you to live by, she does not judge you nor does she require that you adopt or reject certain religious beliefs in order to connect with her. Divine Feminine presence is essentially love, and will flow freely to you when you choose to allow it.



OUR ANCIENT STAR MOTHER - TARA

Tara is an ancient goddess known as a saviouress, a star, a sacred bridge and a spiritual tree. She is celebrated throughout cultures in the East and the West. Tara manifests in various colours which represent her unlimited qualities and capacities to answer all sincere prayers.

Tara teaches us to place our spiritual confidence in her protective blessings, embracing a more fearless attitude. From forms that grant prosperity and enhance the law of attraction, to the fierce forms that distill truth and cut through the illusions of ego, Tara is a liberating force of love that awakens our inner spiritual potency to transform ourselves and our world.

OUR FIERCE PROTECTIVE MOTHER - KALI

Kali is a wrathful form of the Divine Feminine expressing fierce compassionate wisdom. She has a kind and gentle aspect too, which reveals her inner nature - that of love. Kali offers spiritual shelter from extreme negativity and stubborn patterns, difficulties and obstacles.

As pure divine creativity, Kali is also the space from which all resources will spontaneously arise so that divine purpose and destiny will manifest. Adored as a provider of blessings and protections, Kali helps us heal and grow through our challenges, becoming more conscious of sabotaging tendencies within, aligning our lives with the soul's truth.

OUR HEALING MOTHER OF LOVING MAGIC - ISIS

Our Lady Isis is the Ancient Egyptian winged-goddess of love, magic and healing alchemy. Isis is a spiritual master, believed to have descended as an avatar from an advanced star system, in order to guide humanity. Her spiritual arts center around the defeat of negative forces through courage, love, resourcefulness, intelligence and creativity.

Isis is a spiritually-potent Divine Feminine being, who holds the keys to the transformational and victorious power of the heart. Her presence enables us to heal and grow wiser and stronger as we meet our challenges. She ignites the creative, regenerative, healing magic within.



DISCOVER THE KUAN YIN TRANSMISSION™

COURSE OUTLINE

We warmly invite you to join us for the enriching teachings of The Kuan Yin Transmission™ Foundations program over 16-weeks of soul-nourishing learning.

The Kuan Yin Transmission™ is a Divine Feminine spiritual practice and healing modality which can be creatively applied to bring healing to any situation. The methods in the modality are flexible enough to include self-healing, healing with others individually or in groups, and sending healing as needed to individual and group recipients, as well as to distant places, or focusing on particular issues as an offering for the global healing of humanity and our planet including all her precious creatures.

Essential qualities of the Divine Feminine include flexibility and responsiveness, both of which are incorporated into the practice. Practitioners have the creative freedom to follow their inspiration in applying the carefully-created and precise techniques of the modality. From quiet speech to vibrant singing, from meditation or dance to oracle cards, hands-on-healing, restful meditations and working with a crystal, the modality can be adapted to suit your personal style of practice as a healer, whilst still being grounded in an effective and spiritually safe-guarded method.

Through the five modules of the program we dip into the spiritual nectar of the elements, seeking their healing vitalisation, wisdom and sacred medicine to nurture the soul. These modules are the underlying subtle structure through which Alana's in-depth teachings on Our Five Enlightened Mothers and Divine Feminine energy work are shared.

MODULE 1 – Luminous Earth

Week One

During week one you will be welcomed into the experience of embracing your innate Divine Feminine energies of the heart, and orienting your mind towards the inner spiritual dimensions. There is a push-pull between inner and outer experience, especially for modern people on a spiritual path. Navigate this process by allotting yourself sufficient time to explore and reflect upon the course materials, as you open up to the sacredness of this work.

Weeks Two and Three

This fortnight can be strong in effect. You will experience sound healings and prayer practices created specifically to attune you to the presence of Our Five Enlightened Mothers. You are encouraged to repeat these processes as needed, treating this fortnight as a sacred immersion, incorporating rest and reflection practices, such as journaling. You are invited to share your experiences or reflections in the forum too.

Week Four

In this week we open up to the divine building blocks of being - the five elements. With spiritual guidance and two additional healing processes to explore through the week, we ask that you give yourself time to rest and integrate, especially immediately after the healing processes.

If you have physical, emotional and/or psychological detoxification or spiritual purification taking place, witness with compassion, express without being consumed by it. Journal it. Dance, sing or honour your process in an altar or creative process. Please refer to our [Self Care Guide](#) which contains guidance and suggestions for self care during our training together.

Weeks Five and Six

In weeks five and six, we deepen our explorations into the five element theory as it applies to practice of the Kuan Yin Transmission™, along with the basics of anatomy that are relevant to the practice, and Our Five Enlightened Mothers. We ask you to pace yourself in processing the material over this fortnight. You do not need to pressure yourself to memorise everything. Even after completing the course you will continue to learn about the elements, organs and goddesses if you are open to it. It is an ongoing process to understand deeply.



MODULE 2 – Ripening Fire

Week Seven

In this week we begin working with spiritual practice and healing, particularly focusing on conscious surrender, enlightened touch, mantra (sacred sound), mudra (sacred gesture) and the art of visualisation. As with the past two weeks, the topics of these lessons may be revision for some and entirely new for others. Either way we suggest you take time to digest and integrate more deeply. The exercises in this week help awaken the brain's capacity to recognise where spiritual energy manifests in everyday reality. We begin to break down the polarity that our egos create and experience life as a unified and organic energetic expression, all originating from the one source intelligence, yet displaying itself in infinite variety. There can be tremendous joy in transforming this truth from an idea into a lived experience.

Weeks Eight and Nine

In weeks eight and nine we immerse ourselves in spiritual practices of the modality. We embrace sacred techniques such as the Hamsa of the Cosmic Madonna™ and Mudra Dance™. You will need personal space – and perhaps a sense of humour – to do your practice. You might make mistakes as you go, that is to be expected, and yet even in earliest attempts, many participants will feel the flow of energies. This is because the energy flows with the practice. Your sensitivity to energy will increase with practice. Whether it is consciously felt or not, divine energy creates movement at a deeper level. This is why we took our time to prepare in the earlier weeks, to be ready for this movement. Responses to the energies may be expressed in dreams, in physical symptoms, in emotional tendencies or experiences in meditation. The practices – particularly the Hamsa – work with a number of channels in the body and this may result in clearing as part of the awakening process. We encourage you to embrace it and rest into your journey.

MODULE 3 – Sacred Water

Week Ten

The techniques taught this week will help cleanse the energies that you have been activating in the practices of the last fortnight. Playing with beautiful, simple, yet effective psychic seals will help ground and connect you to your body, whilst supporting your nervous system in adjusting to the increased flow of spiritual energy generated through the practices. Sleep is a support for the nervous system too, and this week we consider how to enhance your sleep. Sleep can be thought of as your own daily healing session. It can be treated as sacred time during which you commune with your own innate powerful resource centre of the Divine Feminine – your own unconscious. The source of dreams from the unconscious can be a faithful reflection of the soul, allowing you to move towards healing and wholeness. The support of sleep and dreams for your spiritual journey is noted during this week.

Week Eleven

The new techniques you learn this week – including Cradling™ with Mother Mary, Etheric Gua Sha™ and Light Washing™ – will be enjoyable to practice and will help to replenish your energy field. Even gentle practices done with strong and clear intention can evoke purification and following that, higher understanding. We ask you to take your time working through the new practices this week, feeling for their effect immediately and over the days that follow. Please do not attempt to do everything all at once. You may like to practice one each day or so, and then begin layering the techniques in the order given.

MODULE 4 – Expansive Air

Week Twelve

During this week you'll continue applying the techniques of the past several weeks whilst integrating new practices, including sending healing from your meditation seat, adding optional visualisations for amplifying the generation of Our Five Enlightened Mothers if you wish, and exploring distant healing with a specifically programmed crystal. Each of these techniques add more options to your Kuan Yin Transmission™ practice and strengthen the spiritual flow through body, voice and mind. The soul may undergo ongoing clearing and also access greater spiritual presence during this process. Your own unique path into the wisdom and reality of the Divine Feminine will continue to unfold as you learn and practice the techniques. As the energies grow stronger, you will need to hold greater awareness and consciousness within your being. Then you can recognise and work with what is happening constructively, rather than becoming unconscious, identifying with the energy or acting out. The forum can support you with this sometimes challenging task, but we may also suggest individual additional mentoring for you should your process be particularly activated.

Weeks Thirteen and Fourteen

During weeks 13 and 14 we'll take the modality techniques deeper, learning the steps for optional hands-on healing, including the correct hand placements and methodologies for sealing the energies after hands-on healing. Whether you plan to practice hands-on healing as part of your personally preferred Kuan Yin Transmission™ practice, you are encouraged to explore the hand placements instructions, feeling and sensing for the effect of the energies even in your own body. This will further facilitate flow and integration of the energies of Our Five Enlightened Mothers, whilst preparing you to share the modality with others using your hands, if you wish. The body is honoured as a sacred instrument throughout the Kuan Yin Transmission™ practices and hands-on healing, even simply practicing on yourself, can be spiritually nourishing for both body and soul.



MODULE 5 – Divine Space

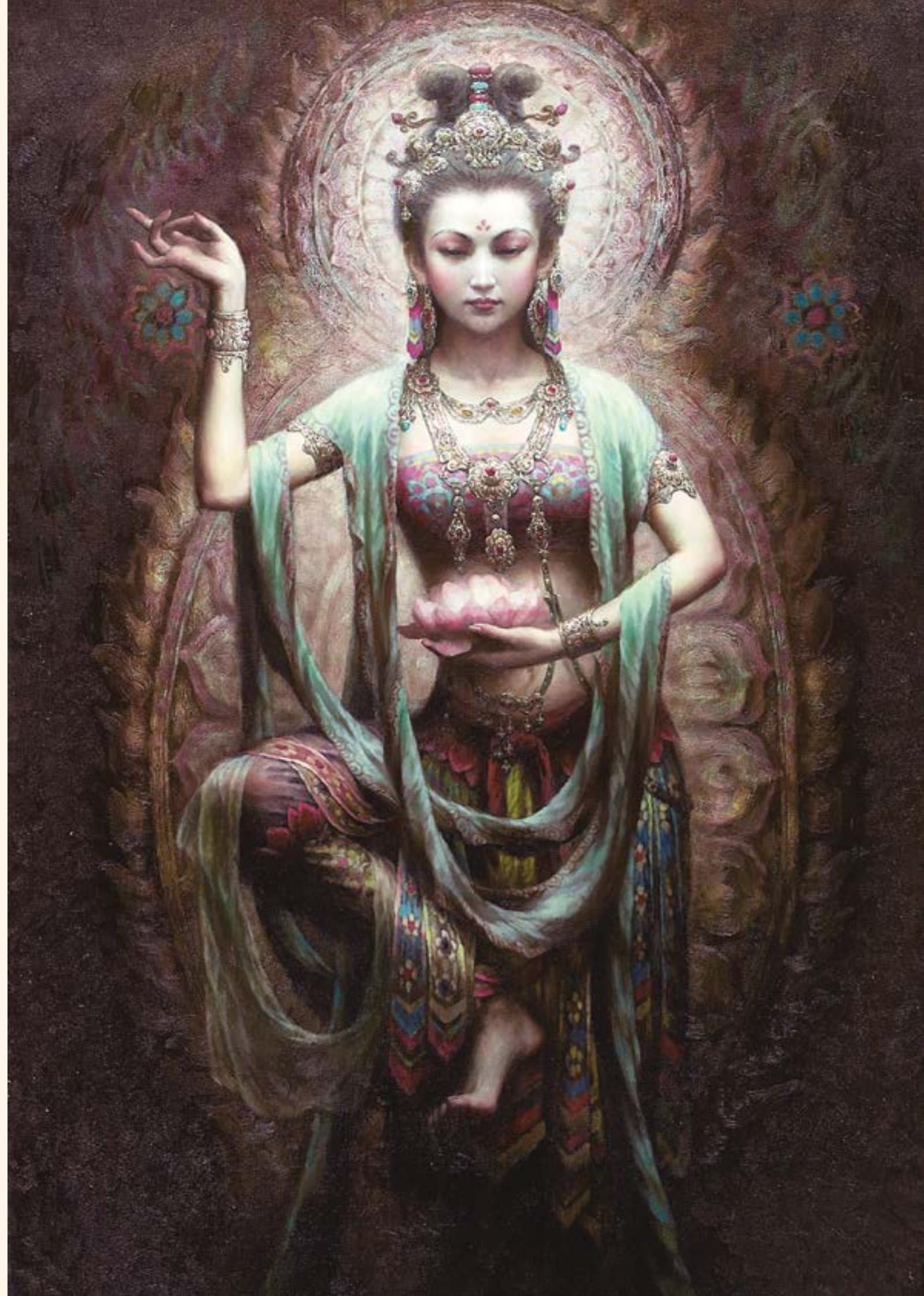
This week you are asked to create space and prepare yourself to receive the sacred Kuan Yin Transmission™ attunement from Alana at the deepest level. The transmission takes place outside of time and space at a soul level between your soul and Alana's, which is why it can take place on a video recording and still be powerfully effective. The energy flowing through Alana when offering the transmission is palpable, strong and vital with Divine Feminine love. Give yourself permission to treat this as a spiritually-intimate, sacred experience and provide the space to receive and integrate it afterwards. The feedback we have received from course participants on their experience of the transmission has been exquisitely beautiful. You have been preparing your body and soul through the past weeks of the course to become ready to receive. Keep your mind and heart open to what may unfold, with trust.

Week Sixteen

During our last week of the program, you will have a chance to reflect on your journey with us through the program and dive deep into preparation of your sacred reflection and creative offering. This can be an opportune moment to contemplate deeply, pulling together the essential threads of meaning that have woven through your body, mind and soul throughout our months together. What has this journey meant for you? What are the distillations of insight and healing that you may want to share with us?

This is also a time to consider what your further journey with us may look like. You may feel yourself pulled towards ongoing development through joining our graduate community. This is a time of transition and we encourage you to consider your choices, from your heart. We continue to honour your spiritual freedom, always, and encourage you to continue moving forward on your path more empowered than ever before.

We thank you for listening to your soul, and for your ongoing support in generating the wisdom and light that this healing modality creates. There are many beings in need. We honour you, your path, and your work, for the sacred contribution that you share with us. May all beings find freedom, love and peace, according to our divine mother's compassionate grace.





KUAN YIN TRANSMISSION™

ONLINE FORUM

Your investment in the Kuan Yin Transmission™ program includes membership in a private, team-hosted online forum specifically focused on the modality. Alana's team has been carefully selected and have a soul connection with Alana, as well as Alana's unconditional spiritual support in hosting the forum. As the entire modality is held spiritually by Alana, along with our team, you will experience the forum as part of the program itself.

In this space you can discuss your studies with

our team and other participants in the program, building a connection with members of the soul group moving through the program along with you.

Whilst the forum is not a therapy group, nor a substitute for professional counseling, it is a lovely way to feel connected and supported as you experience and share your journey. We encourage you to engage with this group, whether you are a person who is comfortable being very vocal or prefers to be a quieter member, contributing only

“
feel connected and supported
as you experience and share
your journey ...

occasionally. All members bring something of value to the community and you are warmly welcomed to participate as is authentic for you. We have noted that those who participate in the forum often experience a sense of deeper belonging and connection which can be enriching. Together, we are creating soul-supportive energies in the forum which help facilitate your personal journey through the program as well as generating healing offerings more broadly for all beings.

Alana's carefully selected training team hosts the forum to answer questions and provide compassionate guidance. Alana and the team meet regularly and work as one to support each other and the community.

To further nourish the soul journey of those working through the program, providing spiritual relief, our team offers sacred support sessions throughout the five modules of the Kuan Yin Transmission™ program.



Sacred Support Sessions

Sacred support sessions are team hosted events conducted online and recorded and stored in the community resources library for the modality. Members have the option to join live or view the session at a time that is convenient. These sessions are run throughout the program, aligning with the relevant modules, and provide an opportunity to experience the spiritually medicinal qualities of the elements in our 'Soul of the Elements' sessions hosted by an experienced practitioner.

We offer five events each term for our entire Kuan Yin Transmission™ community, warmly inviting Foundations program participants, graduates and practitioners to attend live or view the sessions in the Community Resource Library at a convenient time.

Schedule of Kuan Yin Transmission™ Community Sacred Support Sessions

Luminous Earth

During module one, around week 5, we partake of the wisdom essence of the earth element with our Luminous Earth online offering. To awaken light in the body, is to prepare the way for soul, and becoming increasingly capable of channeling divine energies with integrity, creativity and grace. Light in the body stirs consciousness, releasing past pains, awakening insight and creating capacity to experience the subtle body with all its gifts of enhanced healing potential and ability to genuinely experience and be moved by the sacred. In our event, we seek to ground with presence into this body of substantial light, radiant and willing to be steady, accepting of the truth of our soul journey, and growing spiritually. Connecting with the Goddess Kuan Yin especially, we are supported to integrate spirit and matter, birthing soul.

Ripening Fire

During module two, around week 7, we experience the luscious essence of the fire element with our Ripening Fire online offering. We fan the inner spiritual flame with conscious breath, to promote purification and stimulate the ripening of our positive karmic seeds and intentions into inspired activity. The red of fire holds sacred power to protect from negativity and empower the positive. Connecting with the Goddess Isis especially, we generate healing light, nourishing warmth and spiritual release.



Sacred Water

During module three, around week 10, we immerse ourselves in the healing essence of the water element with our Sacred Water online offering. Water is flexible and capable through this flexibility of profound transformation without ever losing its essence. It is an expression of natural law and cycles, of profound spiritual surrender. Conscious surrender allows us to experience the flow of energies, moving with the sacred flow of our own soul journey, towards the original font of spiritual grace, truth and revelation. Supported particularly by Mother Mary, we reconnect to the inner sacred waters of our being.

Expansive Air

In module four, around week 12 - 13, we open ourselves to the inspirational and uplifting quality of the air element with our Expansive Air online offering. Through the support especially of Goddess Tara, we open to be moved by spirit, to swiftly access new realities, to more deeply grasp the potential power of sacred voice, activated by air flowing through the throat, and the heightened potential for manifestation that this brings. Together we choose to express our voices as blessings, strengthening ourselves and sharing this strength to help all beings heal and awaken.

Divine Space

In module five, around week 15, we enter into the vast and regenerative, enlightening dimension of space with our Divine Space online offering. This can be particularly supportive of your preparation to receive the transmission with Alana. In divine space we release duality and enter into the glorious state of simultaneously giving and receiving, experiencing increased spiritual nourishment that accompanies even mere glimpses of the primordial realm that is beyond beginning and end, beyond all concepts. Here we open to possibilities through letting go and becoming comfortable in adjusting to more experience of spaciousness, balanced consciously with presence. Supported by Goddess Kali in particular, we are deeply protected as we release and renew the soul.





Additional Mentoring Support

Although there is considerable support in the forum and in the hosted events for our community, if you are going through intense transformation, you may need or desire extra support. So, at times we may suggest that you seek out additional guidance, healing and support from an appropriate professional.

We have a small team of mentors that are well versed in our courses and processes, Alana's work and the soul healing journey. You may choose to reach out to one or more of these mentors for extra help if you wish at an additional cost.

Although we do recommend it at certain times, you are not obliged to seek mentoring, nor are you obliged to consult with our suggested mentors if you do seek mentoring. We encourage you to trust your heart and seek support from the sources that feel best for you. We wholeheartedly support you in this.

We find that the best mentoring relationship is one with trust, love and positive encouragement. The choice of mentor, and the outcome of the session, is beyond the scope of the training, and any guarantees that we can offer, but we believe that it can be of value to the soul and your spiritual journey, and, at the right time, can help you process the material that tends to arise during the course more readily.

Graduation and Graduate Forum

Upon your completion of the program you will receive a beautiful electronic Certificate of Completion. This will be a testament to the valuable journey you've undertaken with us.

Our community members enjoy lifetime access to course materials and community resource libraries for the spiritual programs that they have completed. You can explore these in your own time, however once you have completed the program, it will be time to move on from the training forum into our graduate community, including our graduate community forum. If you choose to join our graduate community forum, there are many benefits including opportunities to share personal explorations, enjoy additional

materials related to the modality, and practice techniques and sessions with our vibrant, loving community.

In our graduate forum, you can find support and inspiration to continue to practice the modality techniques for healing yourself and our planet, and also discuss the on-going spiritual journey and dive deeper into course materials from the program you have completed, along with our loving graduate community. There is a beautiful sense of spiritual kinship that many find in our graduate community, as we continue on the spiritual journey together.

Your annual graduate membership fee of USD 111

includes year-long access to the team-hosted graduate forum and access to an additional graduate community resources library housing extra teachings and supportive materials for modality practice and spiritual growth topics related to the modality. The annual membership also includes opportunities to participate in our live online sacred support sessions offered 5 times per term, noted above, as well as participate in the community sessions offered by Alana herself during the year.

We believe that the Kuan Yin Transmission™ graduate membership is a worthwhile and enriching element which empowers you to keep your inner healing energies flowing and your spiritual path and soul healing journey supported in a loving, vibrant community of humans devoted to the heart and soul.

There is another option for graduates too, which is to apply to become a professional practitioner.

Becoming a Practitioner

If you are interested in practicing professionally as a healer, then you can apply to become a licensed practitioner of Kuan Yin Transmission™. You can apply as soon as you complete the Kuan Yin Transmission™ program to our satisfaction, or after completing the foundations course you may choose to spend some time refining your skills in the graduate forum, and apply to become a practitioner at a later time that feels right for you.

This modality is recognised by the **International Institute Complementary Therapies (IICT)**. We have secured this accreditation to underline the professionalism of the modality training and practice, and to increase the likelihood that you can obtain professional indemnity insurance for your work as a healer practicing the modality. Please note that you will need to ascertain and adhere to the specific legal regulations governing matters of insurance for professional practice as a healer in your particular location, and such regulations can vary from place to place.

Before we grant a practitioner license, certifying a graduate as a licensed practitioner, we have an ethical and legal requirement to approve an assessment from the graduate. The practitioner assessment gives graduates an opportunity to share details of the experience and practice of modality techniques. We want to ensure that graduates seeking to become practitioners have sufficiently understood and practiced the





modality techniques essential for professional practice at a high standard. This is in addition to the sacred reflection exercise and creative offering that are part of all our training programs. You can find out information about those in the FAQs below.

If a graduate prefers to spend some time in the graduate forum after completing the course, doing further practice in our community and becoming more comfortable with the techniques before applying to become a practitioner, we absolutely support and encourage this. If a graduate prefers not to practice professionally, but would rather focus on expressing their healing channel more informally in our community, and/or for self-healing, we unconditionally support and value such a choice too.

In order to grant approval as a licensed practitioner you will need to meet the following requirements:

1. Successfully complete the full Kuan Yin Transmission™ program and become a graduate
2. Complete an additional short assessment to our satisfaction
3. Undertake any bridging work which may be required at our discretion
4. Complete the application and agreement forms for licensing
5. Pay your licensing fee of an additional once-only payment of USD 388

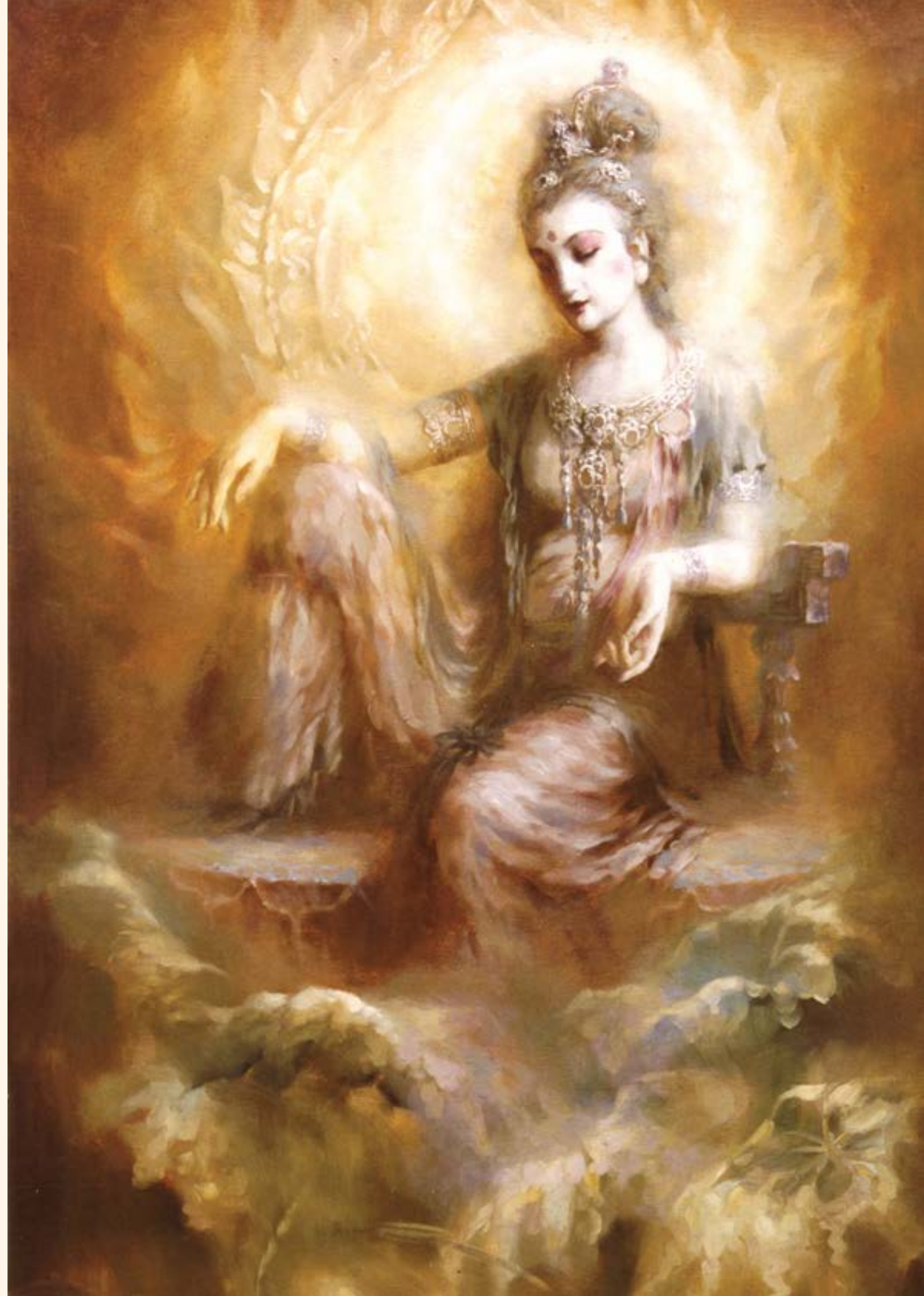
Your Practitioner's License

A practitioner license grants you permission to practice professionally, using our official trademarks, training materials and practices in accordance with the terms of your practitioner's license agreement. We will also provide you with an online listing in our community which is publicly searchable with your practitioner details listed to help promote your work as a practitioner. We also encourage you to engage with Alana on social media to help promote awareness of your modality offerings.

Practitioner licensing offers additional benefits including bonus graphic design files related to the modality practice and a creative marketing suggestions document. This document contains ideas and feedback from Alana's personal experiences and our community outlining possible ways to share your work in the world. Although these are not intended to be a complete marketing and graphic design package, they can enhance the professionalism and growth of your sacred work as a practitioner.

Full details of this process will be provided towards the end of the Kuan Yin Transmission™ program. You are welcome to forward your questions about becoming a practitioner to our team at any time.

Is it time for your soul to be nourished for the next step on your sacred life path? If so, then please reach out to Alana's team with your questions at training@alanafairchild.com or support@alanafairchild.com.



NEXT STEPS

HIGHER LEVEL PROGRAMS FOR GRADUATES

After graduation from the foundations program, you become eligible for higher level training, taking your soul journey to new depths. Our potent 32-week Kuan Yin Transmission™ Guardianship program encompasses the intermediate and advanced level programs of the Kuan Yin Transmission™ modality. It can be completed as two separate levels, spaced apart, or as one deeply transformative masterclass program, with the second part of the program continuing on immediately after the first part, completed over the course of a year. This program is by invitation only to our graduates of the foundations course.

As a graduate of Kuan Yin Transmission Foundations™, there are enriching advanced training opportunities available to you. The progression through the levels guides you deeper into a unique, palpable divine presence with a strongly activating and supportive practice designed to liberate and heal your soul, to manifest light, grace, healing and divine assistance for all beings.

You can travel as far as you wish on this sacred journey with us. The pathway is continually evolving. This is a living modality that is responding to the needs of humanity at a deep level.

If you haven't already done so, you might like to consider some additional, soul-enriching courses, such as Saraswati Healing™ foundations, Saraswati Healing™ Tantric Flow™ or our Rosa Mystica program devoted to Mother Mary. All are available to those who seek to evolve into a new dimension of spiritual fluidity and freedom, opening to the unique and diverse range of Alana's techniques for healing self and planet, which nourish and expand the soul's creative expression.

You are warmly invited to explore our programs and our team is happy to answer any questions you may have by reaching out to support@alanafairchild.com. Information is also shared in the modality forums about what Alana is working on and the various options for higher study if you are yearning to take your journey further with us.



YOUR TEACHER

ALANA FAIRCHILD - INSPIRED CREATRIX

Alana Fairchild is a rare teacher who embodies her free-spirited, loving, and empowering teachings, communicating from a place of authentic being and considerable experience, making esoteric wisdom accessible and relevant for modern humans. Her own path is continually evolving which she shares generously and that makes for a very vital, flowing spiritual path that can truly awaken and support your soul. Most importantly of all, she teaches how to connect to the heart and live from the soul level with wisdom.

Through lessons of her own spiritual journey, she has created over 22 oracle decks, 13 books, and 33 albums of music and meditation. These tools have supported hundreds of thousands of souls around the globe in finding deeper meaning and connection with the sacred..

Her work has been translated into over 11 languages, helping to share her message of universal love, soul empowerment, playful freedom, and generous compassion.

This sacred online journey is here to help you and others experience sacred beauty, as well as empower the soul by developing your connection to the divine qualities within you, whilst learning how to authentically accept and transform through the most challenging facets of the human journey, that you may discover your divine essence and manifest your soul's radiance.

Alana has the spiritual juice to nourish your unique soul journey, setting her apart and imbuing her work with effectiveness and divine beauty.





YOUR KUAN YIN TRANSMISSION™ INVESTMENT

Your investment in the 16-week transformational Kuan Yin Transmission™ program is USD 1888. Payment plans are available for USD 472 each month over a four-month period. Lifetime access to modality-related course materials—including any new course materials for that level—are part of your course inclusions upon completion of the program.

The Kuan Yin Transmission™ book, album and oracle cards and guidebook, are all supportive of the training, and can enhance your experience and practice of the modality, but they are optional extras, and the only course materials you need to complete the online program and practice the modality are unique to the course itself.

So all necessary materials are self-contained in the Kuan Yin Transmission™ program, as PDFs, video and MP3s. There is one exception being that you will need a crystal specifically chosen for your modality practice if you wish to utilise the distant healing technique you will be learning. We suggest a quartz crystal in any form that can be used as a tool solely for practice of the Kuan Yin Transmission™ modality. Our team is happy to answer any questions you may have on the type of crystal that will work best for this purpose.

Throughout the program, you will be held in the heart field of Alana, her higher guidance, and her team who have also trained in the modality. Having this energetic support from Alana and the team provides you with a container of unconditional love for your journey which is another special aspect of the program. We have received feedback from our community members about how special this is.

In addition, Alana and the team offer live blessings regularly online. These are recorded so if you cannot attend the live event, you can still experience the energy in the recording. It will be available for your viewing at a time that suits you, with the recording stored in the Community Resource Library after the event. Since Alana no longer offers one-on-one sessions, these are very special opportunities to work with her live as she opens up the space to provide amplified energy flow, and answer questions.

The course investment includes access to an additional Community Resource Library for the modality, housing over 15 hours of supportive video content, 11 hours of additional MP3 content and Practice Sheets that help you learn how to combine the various pieces of the practice in different ways to suit your preferences and circumstances. We add live event recordings and more to our Community Resource Library on a regular basis.



BLESSINGS FROM GRADUATES OF KUAN YIN TRANSMISSION™

“The Kuan Yin Transmission™ changed my life. I received such grace and a love I was so longing for deep in my heart, and these 5-enlightened mothers directed me towards this with such astonishing unconditional love. My eyes were opened to a truth of how destiny calls us, and a deepening in my heart with such connections and alignment to have such purpose in this world. I felt such devoted support from Alana Fairchild and her many beautiful support angels on all the teachings, and I would highly recommend this sacred healing work to anyone who feels guided”.

– Karen, Canada

“The mudra dance is addictive! Be warned!”

– Elyse, Australia

“Training and being held in the frequency of the five enlightened mothers and the heart field of love and wisdom that Alana generates was an experience that brought great joy and remembrance to my soul. This work is an unfolding journey of Divine grace, with healing benefits for all of Earth and her inhabitants.”

– Laura, Australia

The Kuan Yin Transmission™ has been a life-changing modality for me. Alana’s ability to channel pure pathways of healing and teach them in modern ways, is one of the greatest gifts I have ever received. Not only do I think this modality is for the growing spiritual aspirant, I also believe this is a global training that can teach the world how to honor diversity.”

– Rena, Hawaii

“I began my Journey with Alana Fairchild’s healing modalities in 2020, during the height of the pandemic. I felt a calling from the 5 enlightened mother’s as early as March, well before the launch of the Kuan Yin Transmission™ in July of 2020. I first felt the presence of Isis, then Kuan Yin and followed by Kali. I could not have expected or anticipated the level of unconditional love, personal healing and peace my soul has integrated in such a short time during this training. Despite the world’s most challenging hours, KYT has given me tools to cope with the many challenges that would have typically shaken me to the core. To just say that I love this delicate yet powerful modality does not effectively convey my whole experience: such as the depth of spiritual intimacies you develop with Mary, Tara, Isis, Kuan Yin and Kali; as well as the spiritual, emotional and psychological growth that occurs and participating in a community of practitioners to share this healing with the world. I look forward to continuing my training in Kuan Yin Transmissions. Thank you Alana Fairchild for birthing this beautiful practice, I am honored to be part of this healing modality.”

– Cristal, USA

“I highly recommend the Kuan Yin Transmission™ from Alana. Her connected and deep knowledge of the Divine Mothers is so profound that teaching is unfolding with grace and loving-kindness. It has been a deep integration of my practice, of my spiritual path and an opening to healing through the energy of unconditional love of the Divine Mothers. This transmission has enhanced my connection to soul, body and heart and my sensation of the different energies of each Divine Mother. All my profound gratitude to Alana and the Divine mothers to this unique and precious transmission.”

– Marie, France



RESPECT FROM AND FOR OUR TEAM

We are here for the sacred purpose of facilitating your awakening for the spiritual benefit of all beings. As a team, we work together so we can be here to hold space and to provide energetic support and practical solutions for all facets of work needed for our community. We each bring our own sacred presence and our willingness to learn and grow.

We have compassion for the difficulties that can arise with technology and administration, as well as the spiritual facets of the soul journey. We want to work with you to resolve any issues that may arise for some participants from time to time.

If you encounter difficulties with communication or technology, or any facet of the program, please know that we want to work through the situation with you to find a solution.

When we communicate with you, we do so with consideration, empathy and respect, and we ask that you do so with us too. We have made a commitment to you and the community, to be here, to hold a light, to have compassion and to help each other as best we can.

In a community that regularly works with strong energies, we recognise that both blessings and difficulties can become amplified. It is our own consciousness that helps us work with that as constructively, and creatively, as we can, for best outcome. We encourage every community member to take personal responsibility for their energy and responses to whatever arises, whilst reaching out to our team with a collaborative spirit to create healing outcomes.

Patience has its own intelligence and can help with the resolution of any issues and associated emotions that may arise at times. We are all taking this beautiful but sometimes challenging human journey, and we hope that with love, patience and compassion, the way can be smoother and more joyful for us all.

FAQS

Where do I begin?

The Kuan Yin Transmission™ foundation course is your first step on the Kuan Yin Transmission™ pathway, and is a prerequisite for the Kuan Yin Transmission™ Guardianship program that encompasses intermediate and advanced training over 32 weeks. The foundations program enhances your connection to radiant spiritual wisdom of the Divine Feminine, especially as transmitted through Our Five Enlightened Mothers - Kuan Yin, Isis, Mother Mary, Tara and Kali. These enlightened energies prepare and activate greater activation of your consciousness and energetic vibration, promoting the capacity to genuinely radiate healing spiritual energies. The sacred work of this modality facilitates the soul's healing journey, fosters direct relationship with unconditionally loving spiritual dimensions, and so helps you strengthen your soul and attain your most beautiful path.

You will be nurtured on a journey of self-healing and inner awakening. You will be encouraged to become a grounded and healing presence in your life, your community, and our world.

Do I need prior experience to do the training?

There are no prerequisites needed to join this program, however some familiarity with Alana's work will help you understand the concepts and frequencies that you will be working with through the foundations course.

In the Kuan Yin Transmission program, there are numerous concepts which are explained in their entirety as relates to the modality, so technically, no prior knowledge is needed. We would add this however - if you have no familiarity at all with even the basic concepts of energy, subtle body, and the various goddesses, meditation, sound healing, for example, then you may find the program fascinating, but demanding!

If you are looking for something spiritually substantial, then Alana's modality programs will likely meet this need. If you are seeking something gentler and more oriented towards all-levels without quite so much emphasis on technical training, then we suggest our Mother Mary program, Rosa Mystica.

You are welcome to reach out to our training team with any questions you might have. It has been our experience that when participants feel drawn to this training, it is often their soul-level recognition of something that is needed, even whilst the mind may need to catch up with what the soul already understands. When your heart is ready to be immersed in the modality's frequency of loving divine presence, authentic soul, and the grounded wisdom that Alana herself radiates, you'll feel drawn to join us.

You do not need to be an experienced healer to enrol in the Kuan Yin Transmission. You may prefer to focus on self-healing, offerings to the planet, or working with others throughout the course as suits your preference - though of course we encourage you to explore all possible applications of the techniques before you craft your own preferred method of apply the various options. What you will need is a courageous and trusting heart and a willingness to open yourself to something vast and radiant and good. Your soul will sense when it is time for you to join us on the journey to becoming an expansive channel for love, light and wisdom through this sacred pathway.

“
... strengthen your soul
and attain your most
beautiful path.”



FAQS

How much time will I need to spend on the course each week?

The Kuan Yin Transmission™ program is structured in a 16-week format, with five modules. The structure supports you in moving through different frequencies of higher energies with various divine qualities and sacred themes, adjusting to increased depth and energy as the course unfolds.

The pacing may feel swift at times. Whilst we encourage you to keep to the steady pacing of the program, moving with our team and the group soul process, we also recognise the wisdom of your own inner rhythms. We would prefer that you move through the course materials with integrity and authenticity. For this reason we have a flexible attitude towards completion dates for extenuating circumstances.

The course is designed for, and we suggest, an investment in time of approximately four to six hours each week to maintain your studies. While our team keeps the pace steady, there may be times where you wish to move ahead or take longer to digest certain sections of the course and you will find our community is supportive of your natural pacing when circumstances call for you to embrace a different rhythm.

We do ask you to create enough space in your life to prioritise your studies before enrolling. The feedback we have received from community members who do this is that the experience of the training goes deep for them.

Please refer to our [Self Care Guide](#) which contains guidance for caring for yourself during our training together, as well as our Course Study Guide for organising and prioritising your studies so you have the best opportunity to stay aligned with the timing of the program.

Do I need any extra materials to undertake the training?

No. Everything that you need to undertake the training is contained within the supplied course materials. The one exception to this is a crystal for the distant healing technique you will be learning. Our team is happy to offer advice on crystal selection if desired.

Receiving your certification

When you have completed the course, you receive a beautiful electronic certificate of completion.

If you wish to also become a professional practitioner, and complete the foundations program successfully, as well as completing the relevant forms and submitting the additional short assessment required legally and ethically for us to grant you a professional license, then you will also receive an electronic practitioner license for the modality too, along with a slew of additional practitioner benefits including a marketing kit of graphic design logos for the modality and marketing suggestions PDF too, as well as a publicly searchable practitioner listing hosted in our community space.

Do I need to submit an assessment?

There are no examinations in this program, however we do ask all our participants for an entry of sacred reflection and an additional creative offering during the second half of the program, due at the

completion of the training, with an additional two week grace period after week 16 to further prepare these submissions.

The sacred reflection is a letter that shares your key experiences throughout the course. We encourage participants in the program to keep a journal throughout their journey with us, so they can reflect on their progress and realisations, thoughtfully distilling those at the end of the program.

We also encourage participants to embrace the opportunity for sharing a creative offering with us, which can be such a beautiful, surprising and empowering experience for you to integrate, embody and express your experiences throughout the course in a soulful culmination. From dances, to songs, poems, channellings, gardens, altar offerings and paintings, our creative offering process is embraced by our community, stimulated by the spiritual energies of our work together, and tends to foster an even deeper realisation of the sacredness of your soul journey.

If you wish to become a licensed practitioner, there will be an additional short assessment piece which is needed to honour our ethical obligation to the IICT. That assessment will essentially contain brief outlines and notes on your practice sessions through the program and is less focused on your general spiritual experiences and more focused on the technical aspects of modality practice. We do not judge your experiences. We do wish to exercise responsibility in ensuring that you have practiced and understood the techniques and can share them effectively with others.

Can I enrol in more than one course at a time?

This is possible, however Kuan Yin Transmission™ is a deep immersion and you will need to allow adequate time for rest and integration, as well as practice and study.

The energies in Alana's modality programs, such as Saraswati Healing™ and the Kuan Yin Transmission™ are also very different and unique even though they work for the same ultimate outcome of healing and awakening. Our team often comments on this, noting the palpable difference even perceptible in the community forums and hosted events. This is a difference to be treasured. So whilst we encourage you to trust your own inspiration and enthusiasm, and we sometimes do have participants enrolling in more than one program at a time, we also want you to pace yourself and trust in the wisdom of steady progress too, savouring the fullness of each program.

We would offer this – some community members enjoy enrolling in a non-modality course, such as the Mother Mary Rosa Mystica program, alongside of a more intense modality course like Saraswati Healing™ or the Kuan Yin Transmission™ program, as a form of additional spiritual nourishment and support. This can work very well.



FAQS

Will I have access to Alana during the course?

Alana is always spiritually present in the course. The forums are hosted by a carefully selected team of healers and mentors who are very close to Alana and the team is in regular communication with her, doing the work together of holding the space for the magic of the work to unfold in the soul. They will share messages directly from Alana and you will have a chance to connect with Alana at the opening and closing online ceremonies for the community each year. Keeping Alana's spiritual presence in the training program and the forums is something we take very seriously, providing support on an energetic level as well as creating a safe space for people to connect and share.

Alana's direct involvement is also strongly felt through the content of the courses and key video instructions which flow from her, with some additional supportive offerings from the team as well.

The holding of space and energetic integrity in the course process is an ongoing and always evolving collaboration between Alana, our beautiful human team and the Spiritual Guidance inspiring the work, as well as our valued community.

What are the dates for the courses?

Terms for our courses start in March and August each year, officially opening on the first Monday of the month. The courses close 16 weeks later, with an additional two week grace period within which to enjoy additional reflection time if required before submitting the Sacred Reflection and Creative Offering exercises.

Please note that our team takes time to replenish over the end of year period, taking a break over December and January to ensure we are operating at our best and brightest and deepest for our community during the programs. It takes a lot of energy to hold space for our community, and we treasure our community members so we want to ensure that we walk our talk and practice soul care too. Community events and the hosted forums slow down into 'rest mode' during that time. This is our way of honouring the bright vivacious energy of spirit balanced with the deep restorative feminine earth energies.

What is the refund policy?

We do not offer refunds on this program. Sensitive souls will often feel the energy shift immediately upon enrolment, even prior to the course beginning. We have already committed resources to you, particularly at an energetic level, and places in the program are limited. Nor do we offer refunds if you are unable, for whatever reason, to complete the course or if we cannot offer you certification as an accredited practitioner. However our team wants to help you on your journey and we will do our best to help you find a way to resolve any issues you may have. We want you to feel fulfilled by the program and encourage open communication with our team should there be any questions or concerns throughout the program. Please always feel free to reach out to us.

I'm having an issue or challenge. How can I resolve it?

We want to help you. If you are having issues with any aspect of the training, or are facing challenges on the journey, please email our Support Angel. We care about you and we want to help find a solution.



“I’ve been a part of this community since 2017, and it has only grown and deepened with Alana’s offerings and courses that she consistently creates and shares with the world. The energy and offerings from Alana, and her team of earth angels, has expanded to what I liken to “a festival of soul” where in every corner there is an offering of healing, wisdom, and play (literally – healing rituals are always offered via zoom from her fabulous team). I feel like I am held in such a safe and protected space (and fun!). A space where you come as you are.

Alana’s energy is always felt within the community (how could it not), and offers regular Q&As, blessings and whatever else she feels is needed. It feels that she offers this overarching rainbow of energy holding us all in this sphere of soul freedom, allowing us to all find our individual voices and purpose to share with the world. Alana’s team oversees all that is happening, and not only deals with all the earthly side of the community group, and course support, but ensures that everyone has the opportunity to continue to develop themselves and their own inner healing through their constant and numerous offerings to the community.

And then...there is the community itself where we all are a supportive, authentic group of humans, supporting, learning, and holding space for each other. I continue to be a part of this community for all these reasons, and that there is no pressure, I choose how active I want to be at any time and what offerings I choose to take up. I haven’t experienced such support and immense and vast offerings before. Very grateful to be a part of this movement.”

– Natalie Jane, Australia



LOGISTICAL REQUIREMENTS

OF THE KUAN YIN TRANSMISSION™ COURSE

Acceptance of Terms & Conditions

On registering for our beautiful Kuan Yin Transmission™ course, you will be asked to review and accept our Terms & Conditions. If you have any questions with respect to these Terms & Conditions, please reach out to our team who would love to help guide you through the process.

If you would like to review those Terms & Conditions separately, you may access them via our [Online Terms & Conditions](#) portal.

Beginning Your Training

Accessing Your Training Materials

You will need internet access and a computer (Mac or PC) to access the training materials. Some students are also able to access the materials through their tablet, iPad or via a mobile phone with data access. You will also need a working email account to correspond with us and to receive our feedback and guidance along the way.

All of our courses are hosted on Kajabi. Once

you have purchased your desired course, you will receive an email that welcomes you to your account. Within this email you will receive your username with a one-time password to login to your course. Click the login link in the email and enter your email and one-time password. This will take you to your course portal.

You can access your course portal through your desktop browser at <https://healing.alanafairchild.com> and/or you can download the Kajabi app for your smartphone.

You can download the Kajabi app with the links provided below.

Kajabi on the App Store

Kajabi - Apps on Google Play

If you do not receive an email soon after you purchase the course, please contact support@alanafairchild.com so the team can assist you.

Using Kajabi

We recognise that getting used to a new system can be challenging. If you are not familiar with technology, then learning how to manage that part of the training may be a challenge too. This is completely normal and nothing to worry about. You could see it as a great opportunity to practice breathing, trust and surrender, as well as develop new skills.

Fortunately most trainees find the technology we use to be relatively user-friendly. Our Training and Support Angels training@alanafairchild.com and support@alanafairchild.com are also available to help you tackle any challenges in the technological aspect of the program. This process is quite simple and for most people who already use email and the internet it should not be much of an adjustment.

For those that have not been involved much with technology, take heart! We've found that our community members have patiently overcome any issues they had with adjusting to the use of technology and enjoy what they have reported to be an extremely satisfying and positively life-enhancing program.

Engaging with Your Course Cohort

We have a dedicated online forum for the Kuan Yin Transmission foundations course which will give you the option to connect with others who are enrolled in the program at the same time. Participation within this online forum is not mandatory but is a resource for additional support throughout your journey with the course. The community can help bring your experience of the program to a new level and we encourage you to participate in a way that feels authentic for you.

Copyright Responsibility

The training materials have been lovingly curated for the course and are supplied for your personal use only and only for educational purposes. They are not to be reprinted or shared in any way without Alana's express permission.

If you obtain a practitioner's license, the training materials and additional tools outlined above will also be used to facilitate the techniques, practices and group offerings as specifically outlined in the modality training. You have express permission to reference Alana's published, commercially-available works provided you acknowledge Alana Fairchild as the author of the material and give credit for the source of the work and use it only as you have been trained to use it in the program.

The purchase or downloading of any materials does not imply that they can be made public or shared with anyone else except in the ways specifically outlined in the course. The training materials are for community members enrolled in the Kuan Yin Transmission™ course only.

Lifetime Access to Training Materials

You have lifetime access to training materials once you have paid for your course in full. Upon completion of the training, you retain access to these resources and will continue to gain benefit from any evolution in the teachings as new offerings are added.

Your access to the training materials and resource library for the foundations program continues even after you progress from the training forum to the graduate forum.

Training Others in the Modality Techniques

This is an exciting course, and while experiencing it you may feel the desire to share it with loved ones. While we embrace your desire, you may not attempt to train others in this method. Nor may you implement any of the modality techniques with others unless you have received a practitioner's license and/or have been explicitly authorised by us to do so.

The training within this course, and all of Alana Fairchild's courses, is more than just the training materials. It is the energetic field of Alana Fairchild, the higher spiritual guidance and carefully selected course administrators that energises the program and creates transformation in the consciousness of the participants. There is tremendous energetic input and holding of the training field beyond the training materials which you may not always be aware of consciously, but is integral to your experience of the course.

If you love the work enough to share it and want others to gain the benefits that you have gained, we thank you for this, and ask that you refer people to the official [Kuan Yin Transmission™](#) program for online training with Alana. Or, you may, of course, become a licensed practitioner.



LOGISTICAL REQUIREMENTS

If, as a licensed practitioner, you also wish to become involved in Alana's official training team as a trainer or in another way, please contact us with your expression of interest. We would love to hear from you about the possibility of joining us.

Registering as a Business for Tax Purposes

If you would like, you may register for the Kuan Yin Transmission™ course in your business name for tax purposes. You will be automatically emailed a receipt from the payment gateway upon payment. If you wish to receive your certificate in your personal name, rather than business name, upon the completion of your training, you can add those details to the relevant custom field at time of enrolment.

Practitioner-Specific Information

Not every graduate is destined to become a practitioner. But if you are, then this section will apply to you.

Becoming a Practitioner

If becoming a practitioner of the healing energies of the Kuan Yin Transmission™ modality calls to you, then we invite you to follow that call. Details of how you may become a practitioner are in the Becoming a Practitioner section of this Prospectus. We encourage you to review them and listen to the signals of your own soul journey. Please reach out to us if you have any questions about this process.

Marketing Kits

When you receive your practitioner's license, you enter into a licensing agreement with us and become eligible to use our trademark marketing materials in your own commercial endeavours. We will supply you with an electronic marketing kit with a professionally designed logo for your use online, in brochures or posters, or in your own marketing materials.

You are not obliged to use the materials in the

marketing kit, and their use is subject to the limitations within the Terms & Conditions, notably that you will not associate them with your work beyond your practice of this modality.

Online Practitioner Listing

As a practitioner, you may choose to be listed online in association with us, specifically our brand and community, visible to the public. Your listing can include details about you, your business and the modalities that you offer. This is a suggested optional marketing opportunity for you and not an all-in-one advertising and promotion solution. We hope that this will support your work as a practitioner and encourage you to consider accepting the listing with us.

You may (and should) continue to market your business according to your own strategy and in accordance with the Terms & Conditions.

Practitioner Requirements

You may find the following to be of assistance in facilitating your delivery of the Kuan Yin Transmission™ modalities:

- A suitable venue (or dedicated space within your home) in which to hold classes.
- An online hosting service subscription for virtual gatherings and distance healing work.
- A portable sound system to play the music and meditations for your groups.
- A computer with internet access and email.
- Membership in the IICT – see below for further information.
- Personal indemnity insurance – see below for further information.

While it's not necessarily a requirement, it could be useful to have access to a printer. This is so that you can print out materials if you wish for ease of

use. Printing a version of the template documents in the practice may be easier for you to learn and practice the technique, holding it comfortably 'in your hand' to work from, rather than on a mobile device, but that is a matter of personal preference.

You may also wish to print out your electronic Certificate of Completion for the training, as well as your electronic practitioner license to display in your work space. It is a real sign of achievement and we hope you will treasure it

Membership in the IICT

If you are in Australia, Canada, the United States, the United Kingdom, Ireland or New Zealand, you may seek membership with the International Institute of Complementary Therapists (IICT).

The IICT is a privately run organisation that recognises Alana's Saraswati Healing™ and Kuan Yin Transmission™ as approved modalities. We are also recognised as an approved training provider according to the standards of the IICT.

You can contact the IICT to enquire about joining as a student member for a discounted rate during your training. This is helpful because we ask you to practice the methods as part of your assessment. Once you become a licensed practitioner, then you can then join as a full member at very reasonable membership rates.

You may [contact the IICT directly](#) for information about their membership options.

Professional Indemnity Insurance

As with all businesses in the professional services sector, there is risk associated with providing services to the public, and personal indemnity insurance will help to mitigate those risks to you and your business.

Once you've graduated, you may be able to apply



LOGISTICAL REQUIREMENTS

for professional indemnity insurance. This can inspire client confidence, help you rent venues and may cover you in the event of a legal issue arising around your work.

Kuan Yin Transmission™ is an approved insurable modality with AON in Australia. If you cannot be covered by AON for any reason, then you can apply for insurance under the general category of spiritual healing with insurance brokers that cover alternative modalities in your country.

Membership with the IICT, or other professional association for healing professionals which recognises spiritual healing is the first step to seeking insurance

Saraswati Healing™ is an approved insurable modality with AON in Australia. If you cannot be covered by AON for any reason, then you can apply for insurance under the general category of spiritual healing with insurance brokers that cover alternative modalities in your country.

Membership with the IICT, or other professional association for healing professionals which recognises spiritual healing is the first step to seeking insurance.

Your Legal Situation

The availability of any professional insurance and legal permission to practice spiritual healing may vary considerably from place to place. While we have incorporated flexibility into how our modalities can be applied, such as in person or online, we cannot guarantee that you will have legal permission and/or be able to obtain insurance to practice the modality in all its possible applications in your place of residence.

We recommend that you investigate your personal situation through research and seek qualified legal counsel for advice on the laws and regulations that relate to your desired location for practice specifically.



Cancellation of Your License

If you wish to cancel your practitioner's license for any reason, you may do so by contacting us at training@alanafairchild.com as soon as possible.

In the unlikely event of a breach of our practitioner code of ethics, we reserve the right to cancel a practitioner license. This helps us protect the quality of this modality, the reputation of our brand and community, which in turn supports authentic practitioners in growing their own reputation as compassionate, wise and skillful healers.

Reaching out to our team

We understand that the language of terms and conditions, practitioner agreements or the world of insurance and other legalities may at times seem challenging. Although we cannot offer you legal advice, we do want to help and we will do our best to respond to any questions you have. We care and we want you to succeed. We are here to help.

We have also found that learning how to navigate unfamiliar territory with calm inner trust can also help you grow at a soul level on the spiritual path.

Meaning of the Kuan Yin Transmission™ Symbol

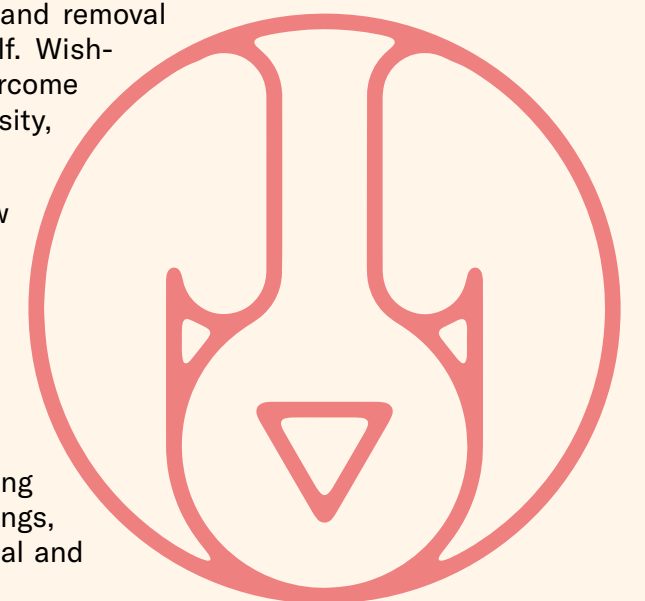
Symbols are powerful and we believe that the Kuan Yin Transmission™ symbol captures and expresses the secret inner essence of the modality.

The symbol represents Kuan Yin's wish fulfilling vase. The wish-fulfilling aspect is associated with all Our Five Enlightened Mothers, from the miracles of Mother Mary and supreme accomplishments despite all odds demonstrated by our Lady Isis, to the wish-fulfilling vase often depicted in Kuan

Yin's iconography, to Kali's bestowal of grace and removal of obstacles, and Tara as a wish-fulfilling gem herself. Wish-fulfilment is an expression of compassion that can overcome grasping and fear, generate serenity, peace and generosity, promoting spiritual liberation from suffering.

The colour peach is created from pink and yellow. Yellow represents wisdom and pink represents compassion. These are the twin flames of Kuan Yin's soul, and express her deepest spiritual purpose. Peach is a ray of new colour vibrations entering the world, helping to release humans from ego-bound suffering, into the beauty, grace and unconditional love of the heart.

May all practice of this modality contribute to the awakening of compassionate wisdom to spiritually benefit all beings, and may the grace of Our Five Enlightened Mothers heal and protect all in need.





The lake I dreamed of one night that made me decide to go to Tibet

How the Kuan Yin Transmission™ was born

The name for this modality came to me in a meditation. To associate the divine name of an enlightened being with my work is something that I consider to be a privilege and the names of the divine ones we always treat with love and respect. Just like our patron goddess Kuan Yin, this modality is a compassionate, creative, uplifting, powerful and protective body of practices to generate love, light, joy, healing and liberation for the spiritual benefit of all beings.

A transmission in this spiritual context is a divine emanation of energy with specific purpose. It is a type of communication from a source to a recipient. It is more than a kind of 'spiritual phone

call' however. In a transmission, an innate seed is stimulated into awakening and development. It could also be called an empowerment, which is a word that is used for master to student transmissions in the Buddhist tradition.

In The Kuan Yin Transmission™ the transmission is what imparts the spiritual signature of the Universal Mother and energetic state of embodying her, through me to you. However that embodiment does not begin with me. I am a channel for it. I understood that I needed to receive a transmission from Kuan Yin in order to create and teach this modality, that a spiritual lineage could be expressed through it.





Transmissions can happen in various ways. It is typically from person to person but there are rarer examples of spirit to person transmissions that are recognised in all religious and spiritual traditions. I knew it was this latter type of transmission that I would need to receive, though I wasn't sure how or when it would happen.

Before I made the final commitment to this project, which felt to me to carry a great deal of spiritual responsibility, I wanted to consult the Universal Mother for her confirmation and if that was given, then her blessing for fulfilment of the work.

Yaks at the sacred lake in Tibet before receiving the transmission

I said a prayer to Kuan Yin specifically, as it was a modality that bore her name. The following day I was teaching at a sacred gathering. I was so engrossed in my teaching that I had forgotten about everything else, including my prayers the night before.

During the course of the event that day, a participant offered me a gift of two cards and two wrapped items. I have a standard policy that I ask people to forward any gifts on to charities, but for some reason on this day, it felt right to accept her offerings. When we had our lunch break, I sat down to read the cards and unwrap their accompanying parcels.

The first card explained how her journey was going, and was accompanied by a selection of organic teas. I was delighted to hear of her progress, and how much the training had supported her, before having a sudden and clear thought that she needed The Kuan Yin Transmission™ training. It didn't matter that it hadn't been created yet! I just knew it would help her. Whilst still pondering on that thought,



Blissed out in yoga pants and trainers after the transmission





The Tibetan Ladybug

I opened the second card. On it was a picture of Kuan Yin! Suddenly I remembered my prayer the evening before and realised that I had got an answer to my question. It was right, it was needed, and yes, I needed to get on with it. I smiled as I reflected on this precious card. Then I opened her second gift - it was a cup and saucer for the tea. It reminded me of Kuan Yin's vase of nectar and blessings. The card with the Kuan Yin image stayed with me every step of the way through the retreat that I led after that event, through Nepal and Tibet, watching over me with grace and light.

It was the retreat that I then led through Tibet that followed soon after which became the place on this Earth through which the transmission was first received. The decision to even go to Tibet began with a dream that I had of a sacred lake so beautiful and serene that I thought it must be a heavenly place that I had conjured in my mind.

Upon waking from that dream, I googled "heavenly lakes" (just to be sure) and was stunned to see a picture of a lake high on the Tibetan plateau in the Himalayas, that looked exactly like

the lake from my dream. It was almost as if someone had taken a photograph of my dream lake and put it on the internet. I realised that I needed to go there. It took over a year for that to happen, dealing with a number of personal obstacles before I was ready to go.

Eventually me and a beautiful group of humans had taken the journey to Tibet together and were performing a sacred ritual beside that very lake. This is where the moment - brief as it was - constituted the final empowerment, permission and divinely loving kick in the soul pants - for me to summon the energy and focus needed to create this project.

As part of the lake-side ritual we were honouring the spiritual practice of saying prayers for ourselves, and our loved ones, and the planet. There is a beautiful practice in Tibet of creating prayer altars made of local stones. They are stacked upon each other, sometimes a prayer scarf is wrapped around them too.

As we thoughtfully gathered our stones, I felt spontaneously to guide the group through meditation, chanting and prayer, and then there was a moment when the guidance came to me that we could also respectfully step towards the lake's edge and bless our prayer stones by touching them lighting with the pure waters of the vast, holy lake.

As I stepped forward and leaned down to carefully place my stone in the pristine waters for blessing, a little ladybug was at that precise moment floating towards my stone, struggling not to drown. It seemed as though water had somehow got between her body and her wings and was preventing her from flying free. My heart turned over in compassion and I held the stone in that precious tiny creature's path, so that as the waters moved her, she could climb upon it for safety. It was a delicate task, but the ladybug and I both managed it successfully. I felt an ecstatic feeling of love awaken in my heart as this little creature scrambled onto the stone and into safety.

At that precise moment I had a vision. I saw a luminous lineage of masters and divine beings, including Kuan Yin, emanating as if from a source of light beyond the bright Sun over Tibet. The stream of their holy light extended through each being, as if they were each seated upon on a rung of a descending celestial ladder, until it finally connected with me, radiating straight into my heart. I felt an overwhelming sensation of love, of acknowledgement, of blessing and of spiritual home. All of this happened in such a brief but life-changing moment. The shift that transmission created has remained with me.

As for the little ladybug, well she decided not to rest on the stone. Instead she proceeded to amble up the index finger of my right hand and rest quite comfortably upon my tiger's eye ring for the next thirty minutes or so as the ritual progressed. Clearly we had similar taste in crystals and jewellery! She eventually flew up into the air as our group gently lifted our stones to the heavens, releasing our prayers.

Each one of us then moved to place our stones into a neat little stack next to the lake. At the moment I placed my stone into the stack, that extraordinary little ladybug flew back down, landed upon it and settled into a restful pose. I might add here that the ladybug is known as the beetle of Our Lady and is considered by many, myself included, to be a signature of Mother Mary.

These few words cannot adequately communicate the depth and beauty of this experience but I wanted to at least attempt to do so, to provide a feeling of encouragement and the beauty of the spiritual dimensions that is so engaged with human efforts, guiding us lovingly always. It is my sincerest hope that sharing this work leads to increasing the conscious recognition of the divine mother's loving presence in our world, to help all beings make spiritual progress, carefully guided through grace, wisdom and compassion into fulfilment of their true nature.



“

May the healing power of your heart awaken within you,
creating a luminous mind and radiant subtle body, so that
your presence in our world is a source of loving wisdom,
divine light and healing nectar to help all beings.

– Alana Fairchild



Community of the Sacred
KUAN YIN TRANSMISSION™