

Alana Fairchild



COSMIC EARTH TAROT

Ritual Guide to Bless & Charge Your Deck



RITUAL PRACTICE AND ALTAR GRID TO BLESS AND CHARGE YOUR DECK

Welcome Beloved!

In this practice you will bless and charge your tarot deck. This is a cleansing and alignment practice which can be done once, or at any time you want to clear psychic energy from your deck – perhaps if another has used it, or if you feel the need to infuse the deck with fresh energy.

A NOTE ON DIRECTIONS AND ELEMENTS

Traditionally, I would align the elemental and direction correspondences in a different way – with air in the east, fire in the south, water in the west and earth in the north. However to align with the seasonal flow and create a clockwise circle to generate energy, I have aligned elements and suits (signified by the aces) so the flow is strengthened. This will enhance rather than diminish the work. I mention it to avoid any confusion or answer questions about the different allocation to what I often include in other expressions of my work.

So in this context we have East – Fire – Spring, South – Water – Summer, West – Winter – Swords and North – Autumn – Pentacles. As you work around the four quarters, you follow the seasonal flow of Earth Mother, which grounds this practice with Earth magic and medicine too.

TOOLS REQUIRED

For this practice you will need your cards, and magical correspondence items – at least four – which represent the key suits of wands – fire, cups – water, swords – air and pentacles - earth.

Examples are a correspondence to represent fire, such as a tealight candle, although you could also use a warm-toned crystal such as carnelian, ruby, garnet or fire agate.

Correspondences to represent air could be a scented aromatherapy oil vaporised, or incense, both of which work with the quality of air. A feather is another possibility, or a symbol of the sky – such as an ‘auspicious cloud’ medallion or a picture of an angel.

For water correspondence, a small dish of clean water (or oil, or wine) would suffice, or a shell.

Your favourite crystal could represent earth, especially if it was a grounding crystal like smoky quartz or any type of jasper. Ocean jasper has a particular Mother Earth vibration to it which can be beautiful. Other options are a favoured or found natural item for the practice, such as a flower, branch or leaf. Fossils or even sand or spices such as cinnamon could also be utilised.

You can do this practice on an altar or any clean and clear space, even outdoors if you wish. You can print the download and use it as a placemat or simply mirror the layout in your sacred space.





SETTING UP THE GRID

Setting up your grid involves taking 8 specific cards from the deck and placing them in the relevant positions as noted on the grid layout.

This includes the Aces – Ace of Wands, Ace of Cups, Ace of Swords and Ace of Pentacles. There are also 4 Major Arcana cards to place in certain positions – these are The Wheel of Fortune, The High Priestess, Strength and The Chariot.

Once you select these cards from the deck, place them in the alignment as noted on your grid layout.

The remaining cards in your deck will be placed in the central position, face-down.

You can add your correspondence items to the respective directional positions (or close by as suits your space) as noted on the grid.

Set out your water or other liquid. Light your candles or incense as is appropriate in your space, being mindful of potential safety issues, especially if outside or near an open window or fire alarm (the latter comes from the voice of experience!). If you wish to play music, have it softly in the background. I have an album called White Light Frequencies which is available for download and streaming, especially created for meditation, healing, and ritual work.

Do what you can to minimise potential distractions such as silencing the phone if possible or closing a door. Get yourself into a mindset of owning your space for this short practice.

When you are happy with the set up of your space and altar, it is time to move on to the process itself.



THE PROCESS

Tuning in and dedication

1. Stand or sit comfortably in your sacred space before your altar.
2. Place a hand at your heart. Reflect on what you are grateful for. Let a sense of gratitude fill your heart and mind. This will empower your work.
3. Say,
“I call upon the enlightened wisdom and divine compassion of unconditional love. Fill this space and this process with your presence. May I receive all that is wanted and needed with grace and for the spiritual benefit of all beings.”
4. Sense a beautiful light filling your space. This light is divine and blessed. Sense it forming a magical and sacred circle around your space. Only positive energy can enter and negative energy is deflected.

Establishing the grid

5. Gaze at your grid. Place a hand lightly upon your heart. Sense a glowing energy stream of gratitude gently releasing from your eyes, infused into the grid and cards. Don't force it just relax and let it flow.
6. Reconnect to your intention for this process – cleansing, blessing and charging the deck.

Say,
“The powers of Life, Love, Light now cleanse, bless and charge this deck with positive divine energy, that all readings facilitated with these cards align with the highest good and offer genuine spiritual benefit for all.”

7. Lightly touch the Strength card in the eastern position.

Say,

“The powers of Life, Love, Light now cleanse, bless and charge this deck with positive divine energy, that all readings facilitated with these cards align with the highest good and offer genuine spiritual benefit for all.”

Gaze at the correspondence you have on your altar for the fire element. Sense the brilliant and warming nature of it – even if it is a red crystal or tealight candle – it possesses the quality of divine warmth and vital life force. It is alive in its own way, containing a ripening power. Sense this vitalising quality infusing your space and you as a spiritual gift. Breathe in and out, relax for a moment.

Gaze at the Ace of Wands, touching it lightly, and sensing the exuberance, Life and creativity it radiates. Let this emanate an energy field of warmth and ripening, increasing the element of fire in the sacred space. This is real, let it happen. Relax for a moment.

8. Lightly touch The High Priestess card in the southern position.

Say,

“Blessed and Charged with Divine energy, Beloved Lady dwelling at the thresholds, unveils the secrets for merciful clarity and higher understanding. In service to Divine Love, so be it.”

Gaze at the correspondence you have on your altar for the water element. Sense the powerful and responsive of it – even if it is just a few drops – it possesses the quality of flexibility, receptivity and adaptability. It is intelligent in its own way, containing a life-giving power. Sense this generous quality infusing your space and you as a spiritual gift. Breathe in and out, relax for a moment.

Gaze at the Ace of Cups, touching it lightly, and sensing the flow, generosity and creativity it radiates. Let this emanate an energy field of nourishment, infusing the element of water in the sacred space. This is real, let it happen. Relax for a moment.

9. Lightly touch The Chariot card in the western position.

Say,

“Blessed and Charged with Divine energy, the wisest way to move forwards on the path is recognised and actioned. In service to Divine Love, so be it.”

Gaze at the correspondence you have on your altar for the air element. Sense the subtlety and lightness of it – even if it is a feather or some incense – it moves through space so freely. It is untethered, it can move easily and without attachment. Sense this liberating and detached quality infusing your space and you as a spiritual gift. Breathe in and out, relax for a moment.

Gaze at the Ace of Swords, touching it lightly, and sensing the power, truth and freedom it radiates. Let this emanate an energy field of liberation and letting go with clarity, which enters the sacred space. This is real, let it happen. Relax for a moment.

10. Lightly touch The Wheel of Fortune card in the northern position.

Say,

“Blessed and Charged with Divine energy, O Fortuna, goddess of destiny, may divine grace reveal and protect the true path. In service to Divine Love, so be it.”

Gaze at the correspondence you have on your altar for the earth element. Sense the substantial nature of it – even if it is a small leaf – it has been part of the body of Mother Nature. It is real, present and manifest. Sense this grounding protective quality infusing your space and you as a spiritual gift. Breathe in and out, relax for a moment.

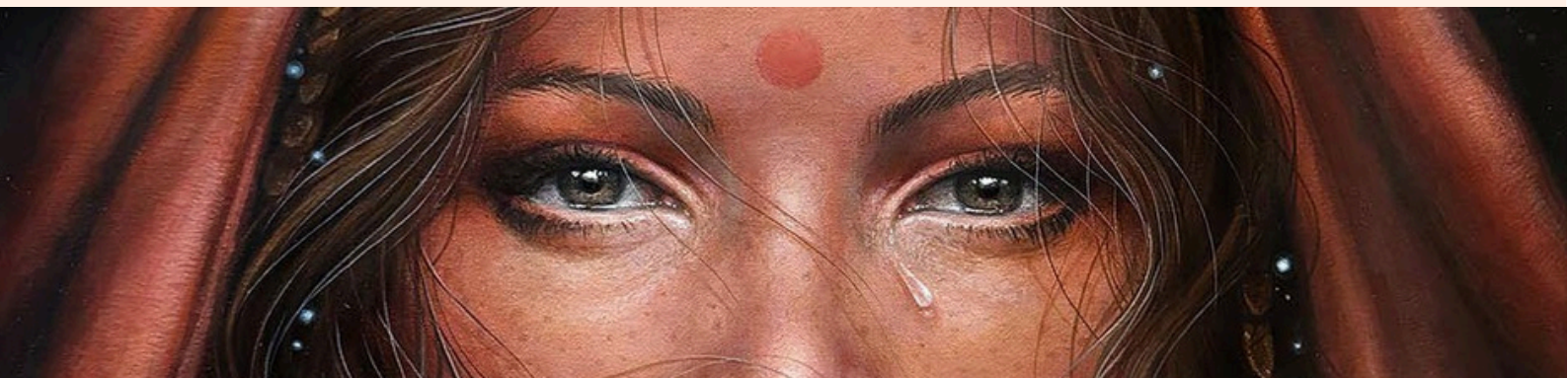
Gaze at the Ace of Pentacles, touching it lightly, and sensing the abundance, fruitfulness and prosperity it radiates. Let this emanate an energy field of presence to ground the quality of earth in the sacred space. This is real, let it happen. Relax for a moment.

Sealing and releasing the space

11. Then place all the cards back into the deck, resting in the central position.
12. Visualise, intend, imagine that all the positive energy generated, including that from your words and visualisations, and the correspondence objects on your altar, now distils into a ball of golden light hovering above your deck. It reduces to its finest, subtlest form, and dissolves into the card deck.
13. The deck is now blessed and charged. Say,
“This tarot deck is now blessed and charged with positive divine energy.
For the spiritual benefit of all beings, may all works with it be of the highest.
So be it!”
14. Place your hands in prayer and bow your head. You have completed your work.
15. You can now do a reading or put your cards back in their box or your preferred storage method (such as wrapped in a silk scarf), for later use.
16. Ground yourself fully in the present moment with some gentle movement.
17. Tidy your altar and clear away your offerings.

Would you like more, beloved?

Join me on my [YouTube channel](#) where I talk about some of the deeper reasons and spiritual secrets of unusual images in cards like The Tower, The Wheel of Fortune, The Emperor and The High Priestess in my Cosmic Earth Tarot. And much more!



Gratitude for art by Autumn Skye Morrison from Alana's Cosmic Earth Tarot